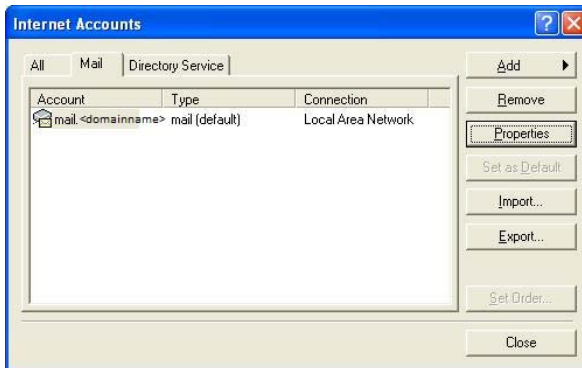


# Outlook 2000 JKNET Port change

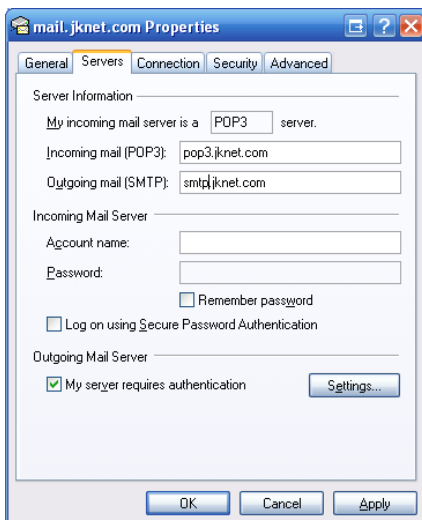
1. Click "Tools" -> click "Accounts..."



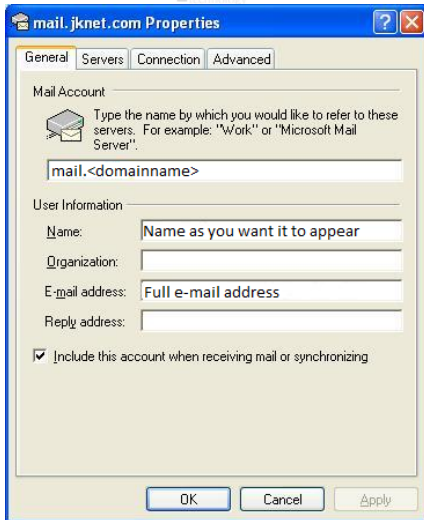
2. Select "Mail" tab -> select your account -> click "Properties"



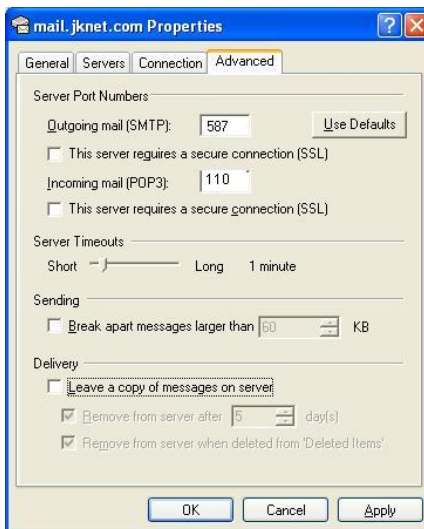
3. Verify mail server settings Incoming mail (POP3): pop3.<domainname>  
Outgoing mail (SMTP): smtp.<domainname>



#### 4. Click “Advanced” tab



#### 5. Change “Outgoing mail (SMTP):” from 25 to 587



#### 6. Click “OK”

#### 7. Click “Close”