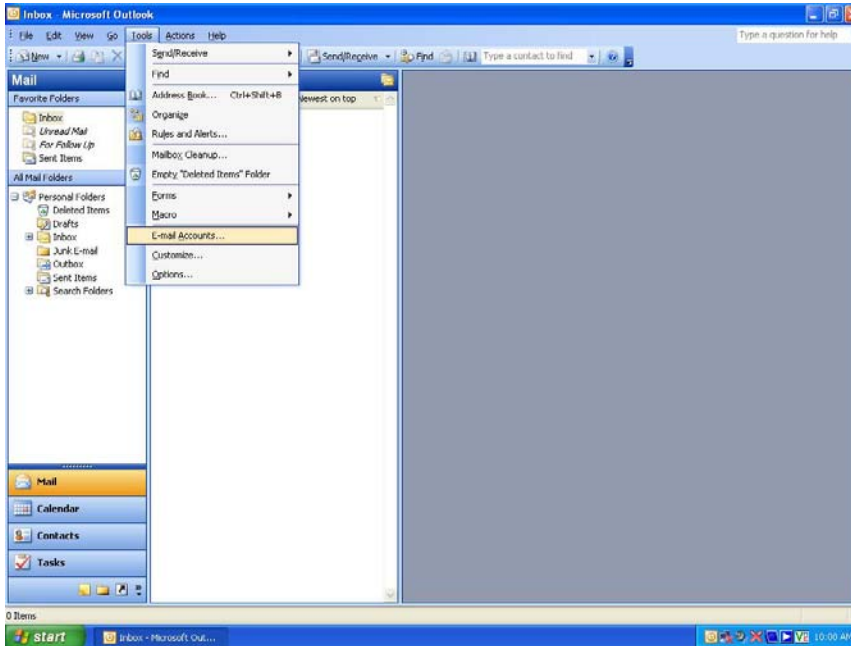
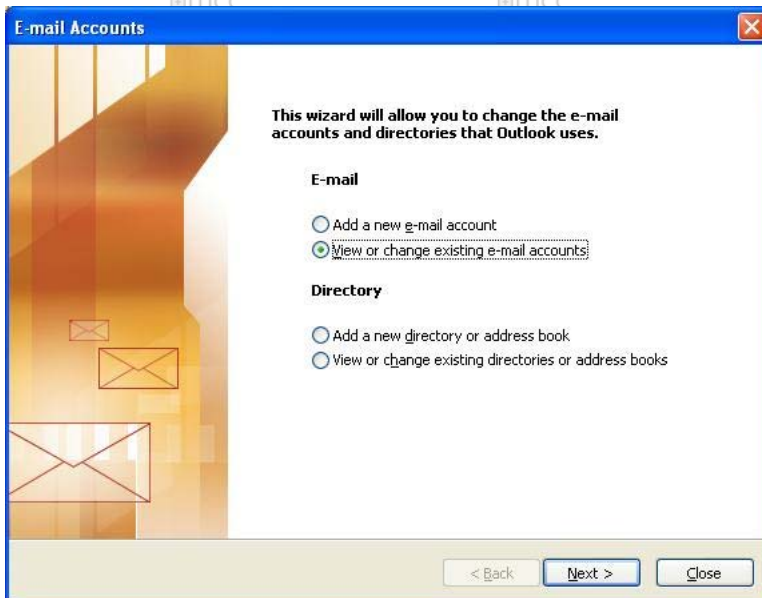


# Outlook 2003 JKNET Port Change

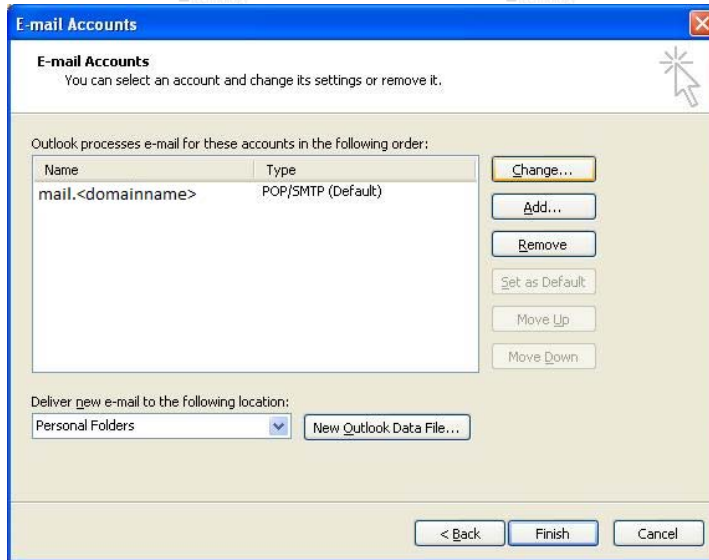
1. Click "Tools" -> Click "E-mail Accounts..."



2. Select "View or change existing e-mail accounts" -> click "Next >"



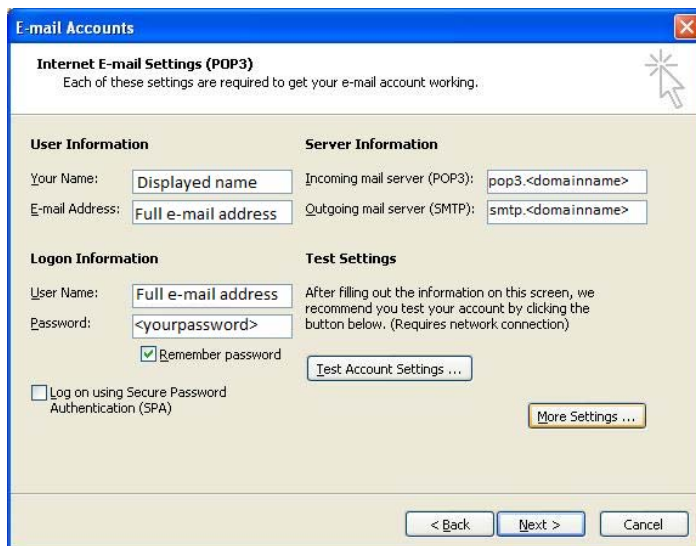
## 3. Select your account -&gt; Click “Change...”



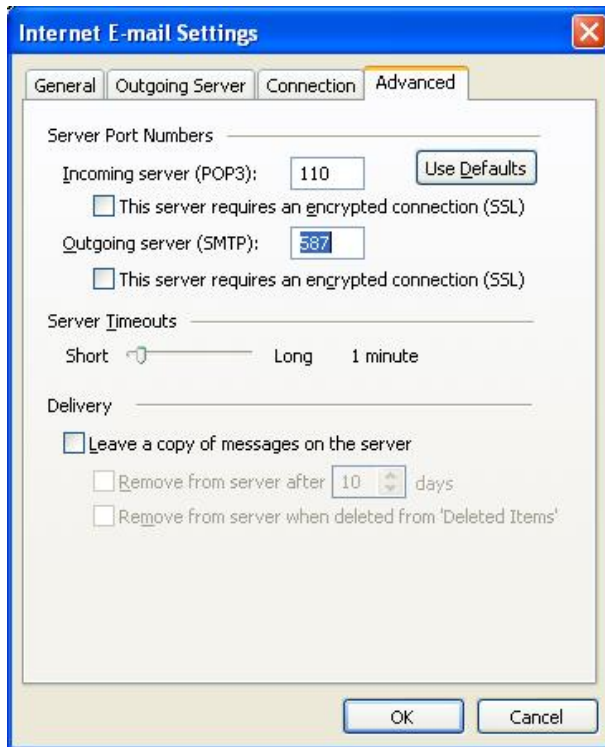
Verify the following settings:

- Incoming Mail Server(POP3) = pop3.<domainname>
- Outgoing Mail Server(SMTP) = smtp.<domainname>

## 4. Click “More Settings...”



5. Click "Advanced" tab at top -> Change "Outgoing server (SMTP):" to 587



6. Click "OK" -> Click "Next" -> Click "Finish"